

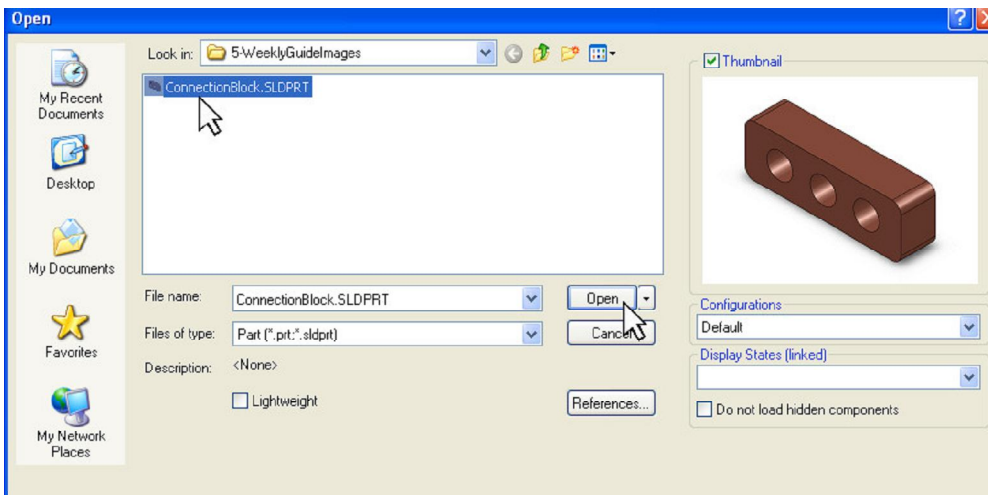
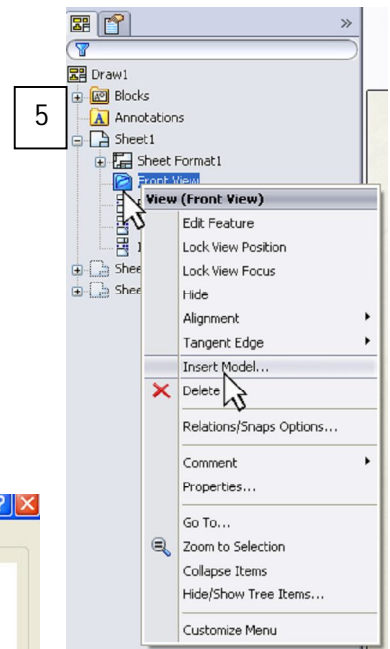
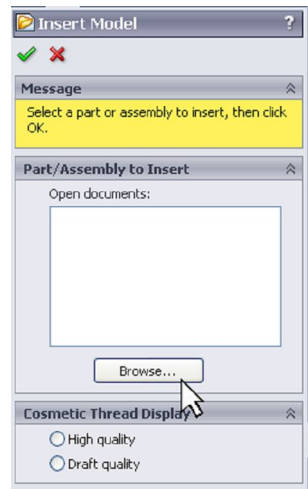
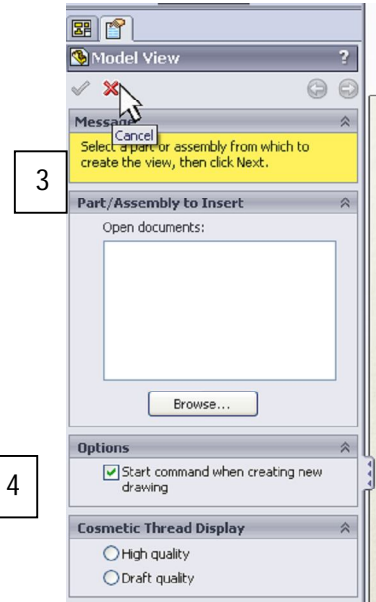
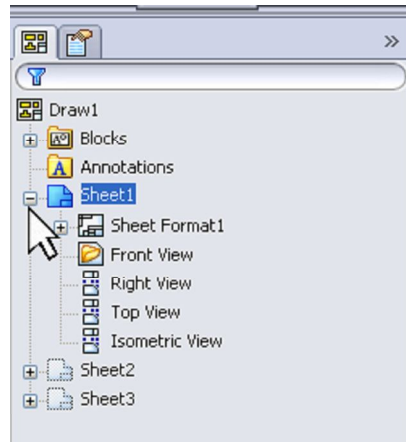
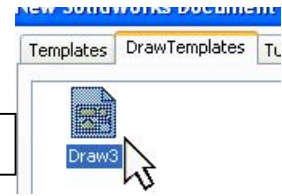
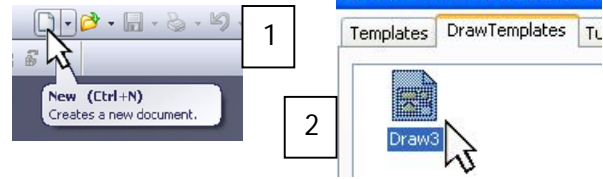
## Design 0100, Weekly Design Guide Week 6, The Connection Block Drawing

The Connection Block Drawing will introduce the student various drawing elements that will give them an insight into how fabrication drawings are put together so that others can build their design.

Perform the following steps:

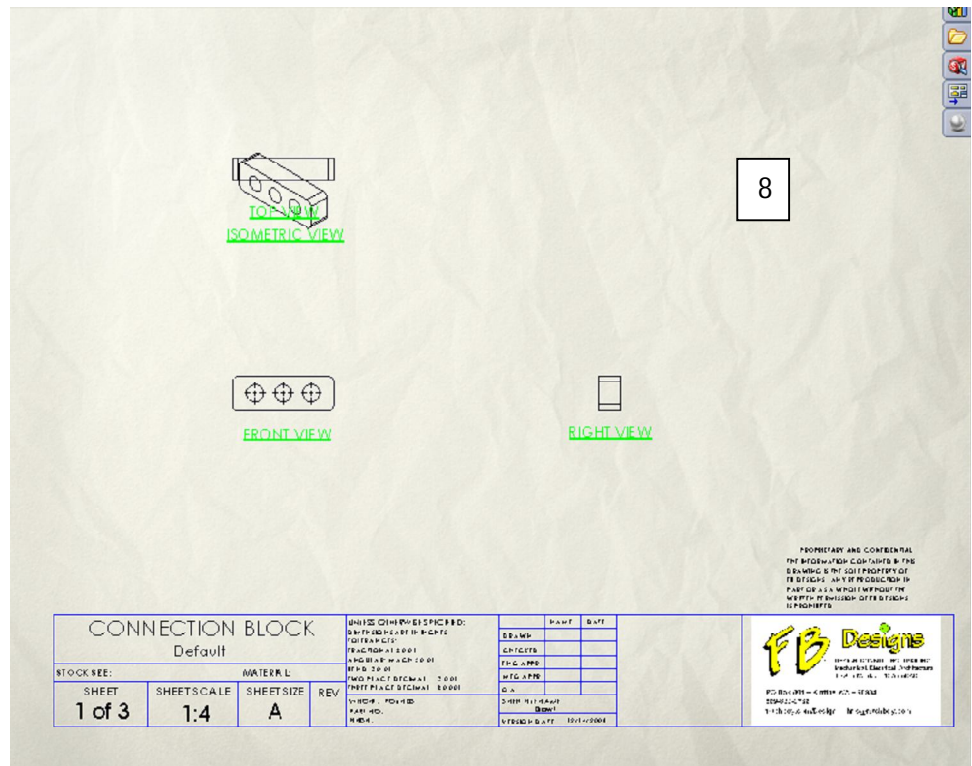
Open a new document:

1. Choose "New" then press "OK"
2. Open the Drawing Template "Draw 3" from the folder "Design 0100 Student Files" in the Students at St. Joes Server. Save this as a drawing in your Week6 folder and name it "Connection Block Drawing".
3. Close the Model View window (we will insert a model in a different way).
4. On the "Feature Manage Design Tree" open up the "Sheet 1" folder by clicking on the plus (+) sign.
5. Within the Sheet 1 folder right click on "Front View" then select from the drop down menu "Insert Model"
6. In the open dialog box choose the "Browse" button.
7. Choose the location of your "Connection Block" (probably on your flash or thumb drive in the Week6 folder). When it appears in the upper left corner of the file window click on the "Open" button.



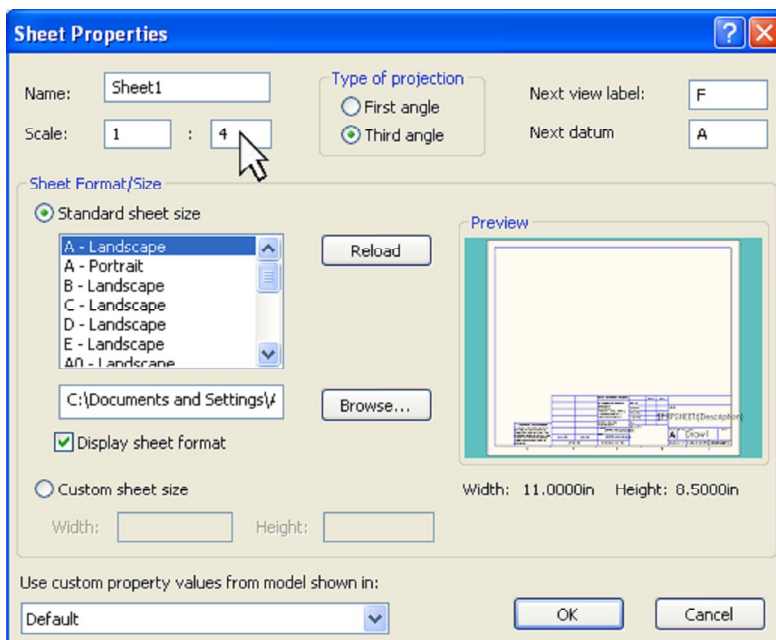
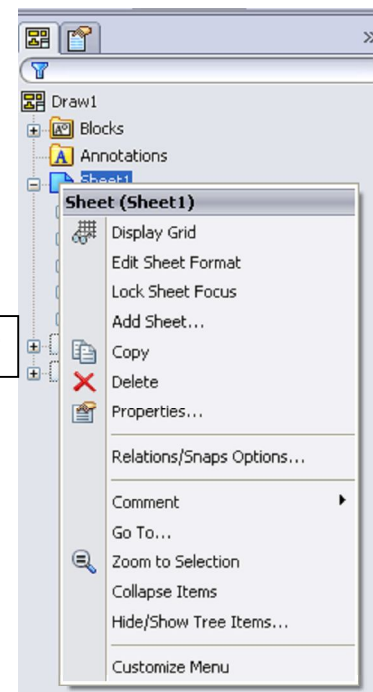
## Design 0100, Weekly Design Guide Week 6, The Connection Block Drawing

8. The drawing should look like it does on the right. The following steps will be used to clean up this drawing including changing the scale, moving the isometric view over to the right and assigning dimensions.



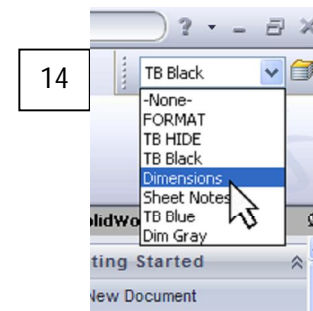
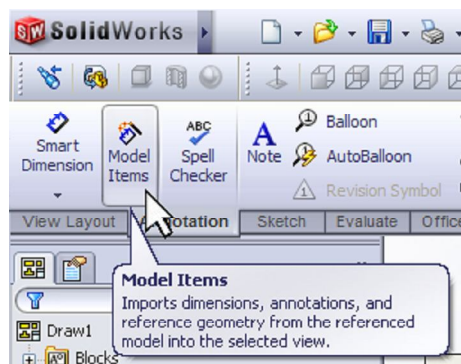
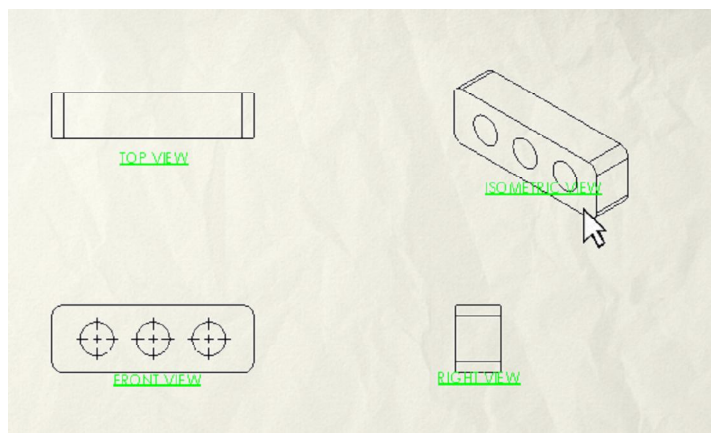
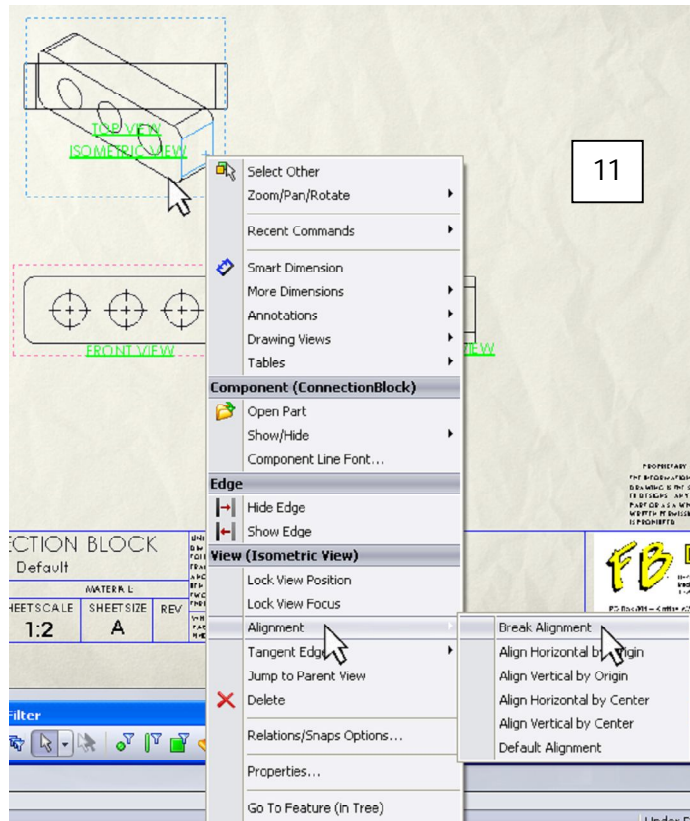
9. Go to the Feature Manager Design Tree and left click on Sheet1 then right click on the drop down menu "Properties".

10. Change the Scale to 1:2 in lieu of 1:4. What this means is that one inch measured on the object that you show on your drawings is equal to 2 inches on the real object. For designers, it is not usually convenient to draw things full sized (like a house) so they scale down their designs to fit on a piece of paper with a specific ratio or scale such as 1:2. Click the "OK" button.



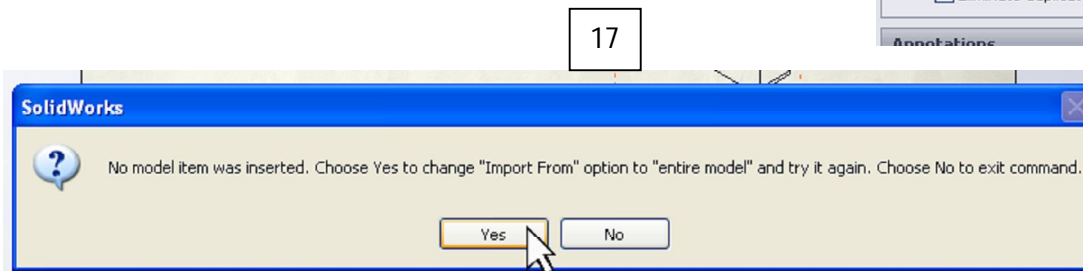
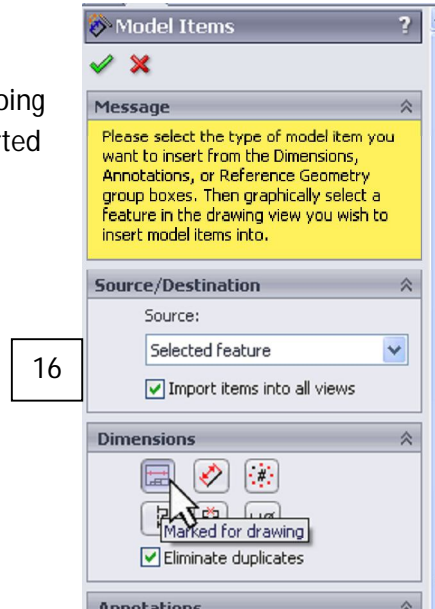
## Design 0100, Weekly Design Guide Week 6, The Connection Block Drawing

11. Click on the "Isometric View" (the one that looks 3D) then press the right mouse button, look on the drop down menu for the "Alignment Option" then select from the drop down menu "Break Alignment". You need to do this to move the isometric view over to the right.
12. Click on the "Isometric View" again and with the left mouse button depressed move it over to the right and find a good home for it. The text stating "Isometric View" comes with this move.
13. Re-arrange the View Titles by clicking on the text (once) and moving them with the left mouse button depressed until the text is in a good position centered under the view.
14. Right click on any toolbar and select the "Layers" toolbar. Park this toolbar in the upper right corner of your SolidWorks work area. Click on the pull down arrow and select "Dimensions". This layer is red and all dimensions entered into this drawing will be on this red layer.
15. Click on the "Model Items" on the "Command Manager"



## Design 0100, Weekly Design Guide Week 6, The Connection Block Drawing

16. In the Properties Manager, make certain that the button labeled "Marked for drawing" is checked. What you are doing here is inserting the dimensions that you had already inserted into your model the Connection Block. Click on the green checkmark.
17. Click yes when this pops up.



18. Move the dimension text around to make the drawing more attractive and easy to read. Try not to stack text on top of each other or over lines that represent your model. Also put the smaller dimensions on the inside with the longer dimensions on the outside.
19. Delete the dimension shown for the center circular cut. Click on the dimension and press the "delete" key on the keyboard.
20. Modify the dimension on the right circular cut. Click on the dimension and go the Properties Manager and place your cursor at the end of the text shown. Press the "enter" key on the keyboard then type in "TYPICAL" in capital letters as shown below.

