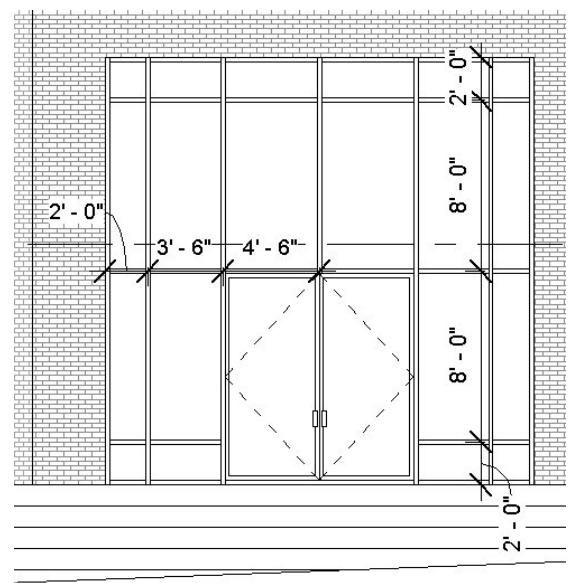
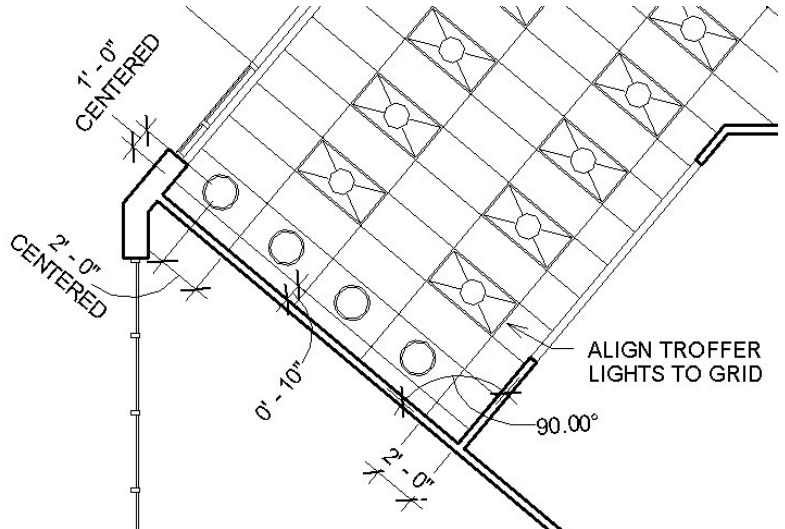
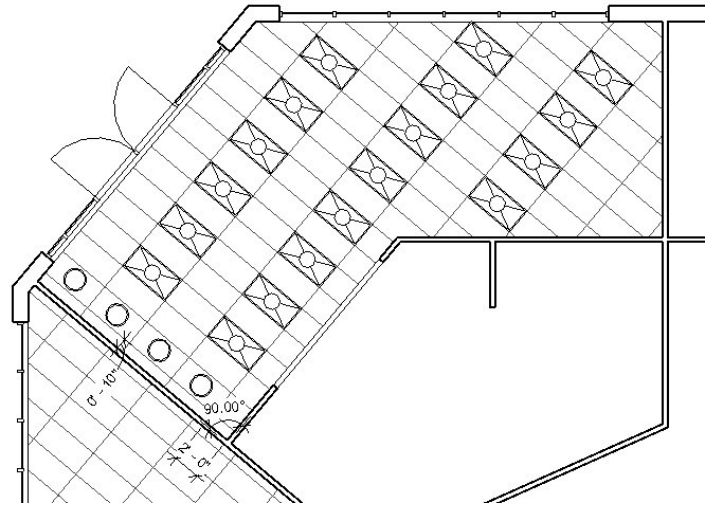
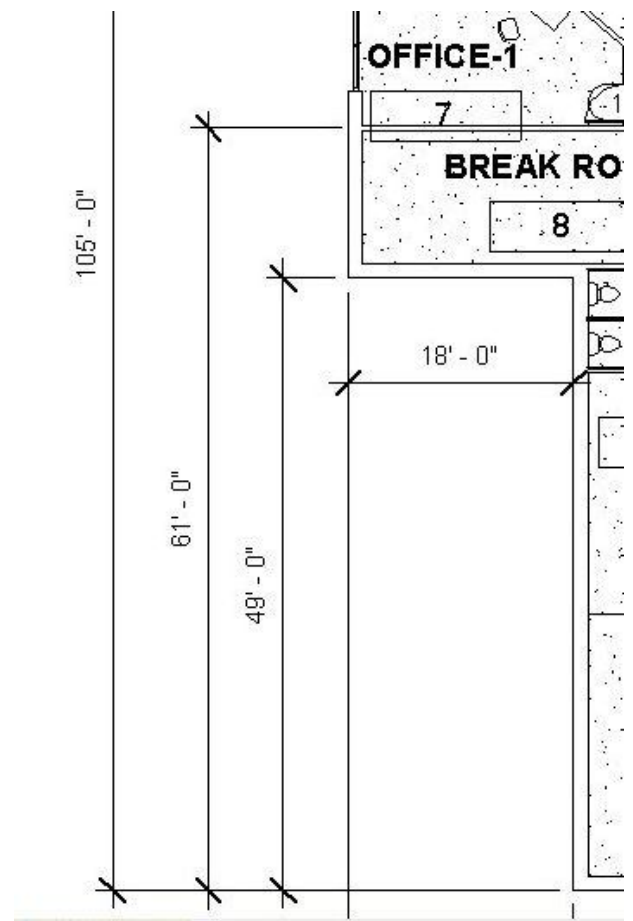
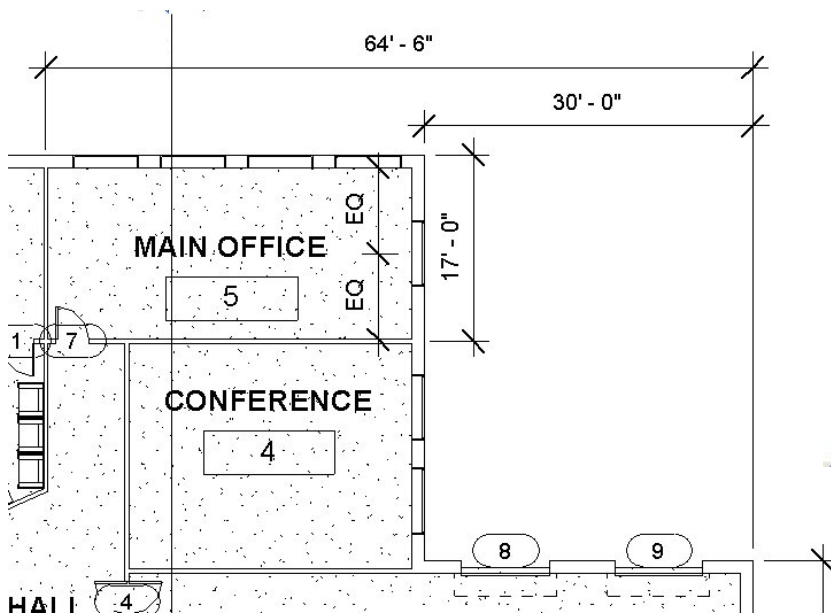
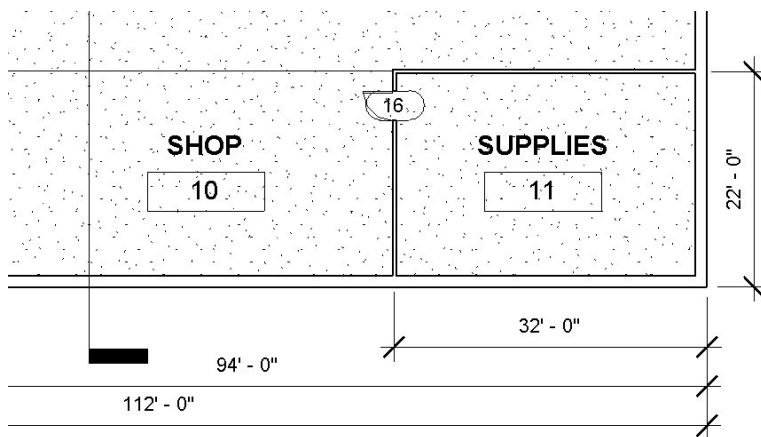


Complete the Revit model incorporating the following items: (40 points)

- Change ground floor plan to a scale of 1/18" = 1'-0" (1pt)
- Dimensions as shown (on the next page), interior walls to the interior wall center (2pts)
- Fix the flashing floor (1pt), insert a pad at 9" (1pt)
- Create a ceiling, 2' x 4' ACT System, offset from the GROUND level by 10' 1" (1pt), align the ceiling grids and dimension as shown (on the next page) (2pts)
 - Install Troffer (Troffer Light Lens 2' x 4'...) and pendant light hemisphere (100W 120V) as shown (1pt), line these up and insert permanent dimensions as shown (2pts)
- Modify the curtain grids and delete the mullions on the curtain wall as shown (on the next page (2pts) Insert an elevation for this view (1pt).
 - Install a curtain wall door as shown (Store Front Double Door) (1pt)
- Insert Rooms with room separations and Room Tags as shown
 - 1-ENTRY, 2-DISPLAY, 3-RECEPTION, 4-CONFERENCE, 5-MAIN OFFICE, 6-OPEN HALL, 7-OFFICE1, 9-FABRICATION (2pts)
- Furniture
 - Line up the desk to the nearby wall and desk in the reception area, lock it (1pt)
 - Load and install furniture tags on installed items in the office and reception areas, 1/4" leader, horizontal numbers, add values, neat and legible (2pts)
- Windows, modify the window head height on the first floor to be 6' 6" (1pt)
 - Install window tags, no leaders, neat and legible (1pt)
 - Properly orient any misoriented windows (EC)



- Doors, modify the following door locations, Main Office in from the Open Hall opens to wall, 2 feet from center of the door to the wall (2pts)
- “Load” your sheet family into the ICE project with your updated title block from Week 8
 - Title block, width and cell adjustments as demonstrated in videos (2pts)
 - Proper Text and Label sizes, properly named, proper fields (3pts), logo as described in Week 8 (4pts)
 - Create a first floor plan sheet
 - Sheet name: "GROUND FLOOR PLAN", Sheet number "201" (1pt)
 - Insert ground floor onto sheet (1pt), CAPITALS (1pt), Hidden Lines visibility and center (horizontal) left (vertical) alignment on the sheet (2pts)
 - Crop and hide area (1pt), adjust the view title to just below the view and bottom dimensions, aligned on the left side of the building (1pt), objects and annotations neat and orderly (1pt)
 - Scale, 1/18" = 1'-0"
 - Print your Ground Floor Plan sheet, 6015 printer, Properties choose 11 x 17, Settings choose “Center” and zoom “50%”, use Preview first before printing.
- Fix all errors
- Extra Credit Items, list here:



Progress on your Commercial Project (20 points)

- Show exterior walls, custom wall (1pt), permanent dimensions in whole or half foot increments, all external wall features, no redundant dimensions, dimensioned from the exterior wall edges (2pts)
- Show custom levels, CAPITALS (1pt)
- Room bounding and labels with consecutive numbers and names in CAPITALS (1pt)
- Interior walls and dimensions, custom wall, at least 8 (1pt)
 - Permanent dimensions in whole foot or inch increments, at least 10, dimensioned from a common wall edge to a consistent edge or centerline of the interior walls (2pts)
 - Floors, at least 2, custom (2pts)
 - Exterior doors, at least 2, double door for large facilities (1pt)
 - Interior room doors with trim (1pt)
 - Create a sheet for your Ground Floor plan
 - Incorporate your sheet family into your Commercial Project with the updated title block with logo from Week 8 with the proper fields fill in (2pts)
 - Insert your ground floor onto this sheet, CAPITALS, center view (1pt)
 - Proper scale, hidden line visibility for the view, crop and hide area (3pts)
 - Adjust the view title to just below the view and bottom dimensions, aligned on the left side of the building (1pt) objects and annotations neat and orderly (1pt)