

4

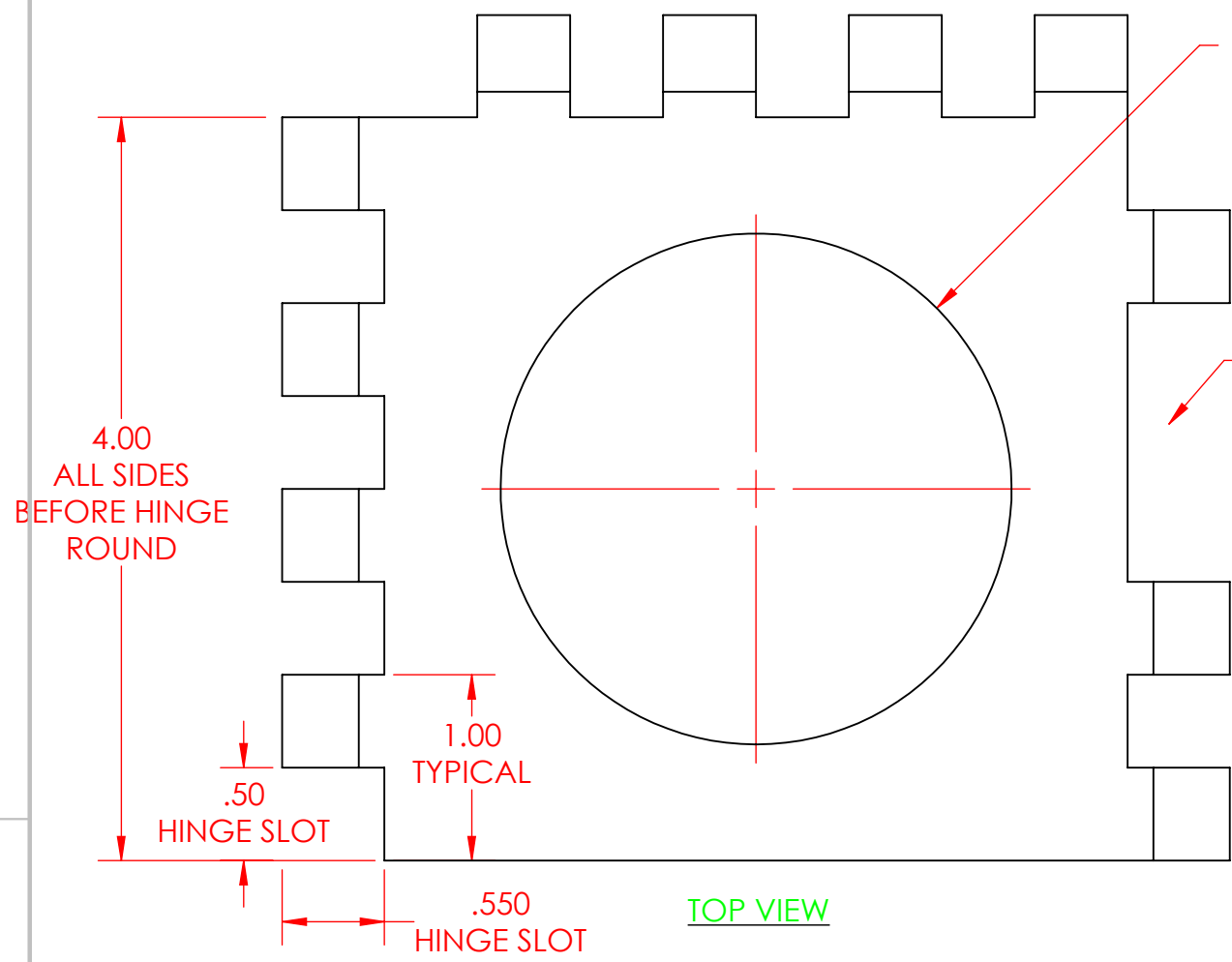
3

2

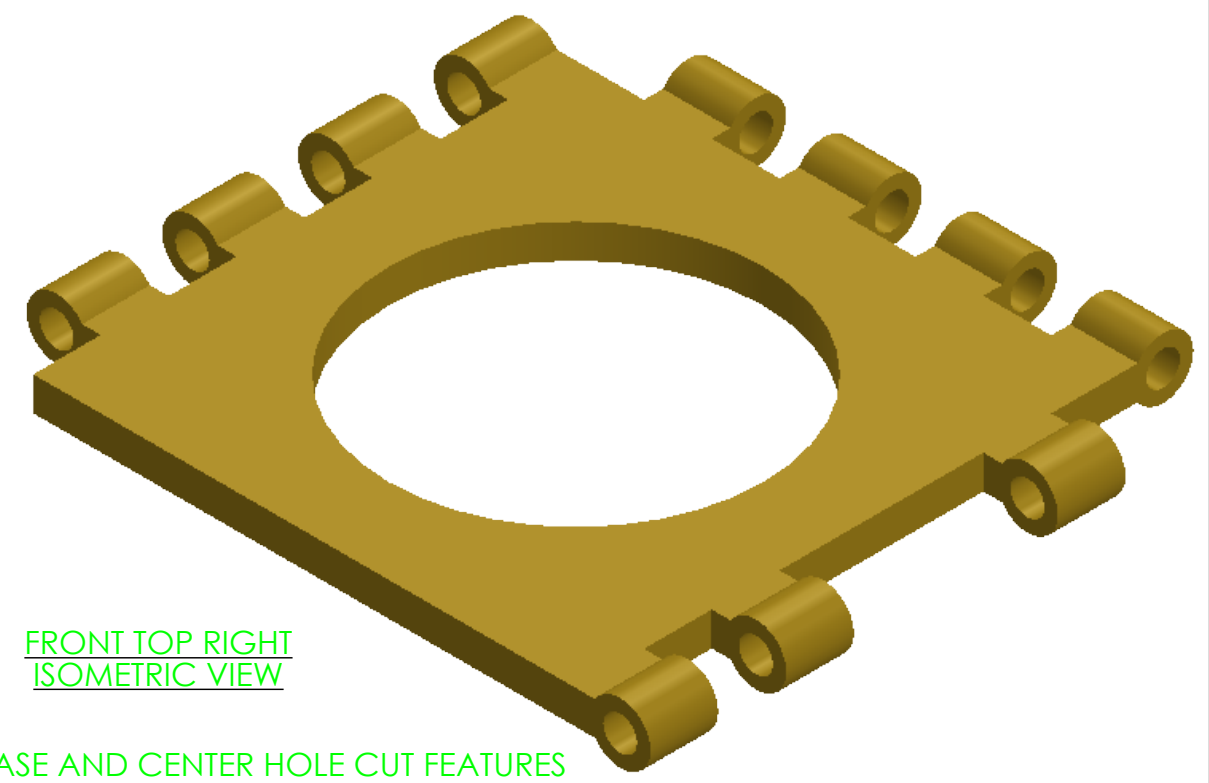
1

B

B



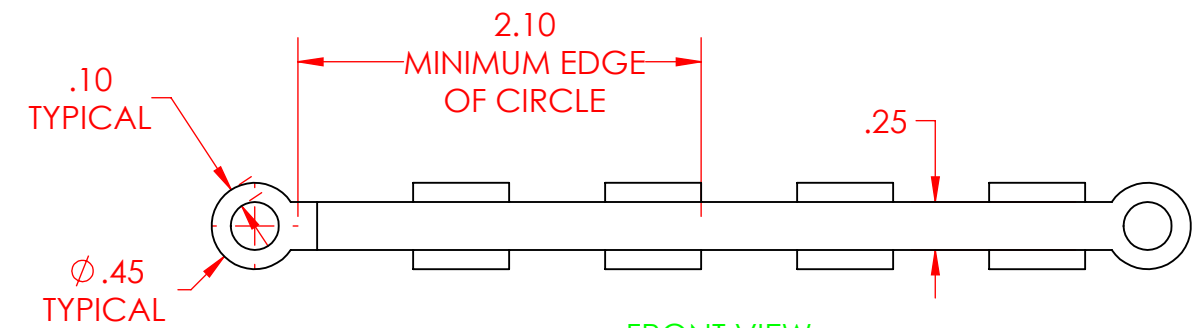
TOP VIEW



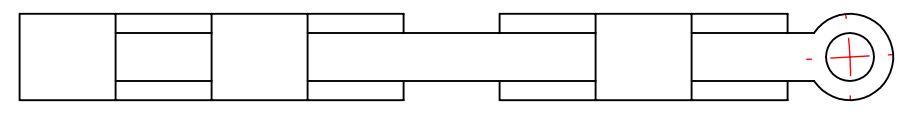
FRONT TOP RIGHT ISOMETRIC VIEW

SHEET NOTES

1. MASS PROPERTIES AFTER INITIAL BASE AND CENTER HOLE CUT FEATURES
 1. MASS: 0.7723 POUNDS
 2. CENTER OF MASS IN THE CENTER
2. MASS PROPERTIES WITH THE ABOVE FEATURES PLUS THE HINGE ROUND AND HINGE ROUND HOLE FEATURES
 1. MASS: 0.9419 POUNDS
 2. CENTER OF MASS: X = -0.4086, Y = 0.0000, Z = 0.0000
3. MASS PROPERTIES WITH THE ABOVE FEATURES PLUS THE HINGE ROUND SLOT CUT LINEAR PATTERN FEATURES ON THE LEFT
 1. MASS: 0.8571 POUNDS
 2. CENTER OF MASS: X = -0.2245, Y = 0.0000, Z = -0.0247S
4. MASS PROPERTIES WITH THE ABOVE FEATURES PLUS THE HINGE SLOT CUTS CIRCULAR FEATURE PATTERN TO THE BACK AND RIGHT
 1. MASS: 1.0266 POUNDS
 2. CENTER OF MASS: X = 0.0206, Y = 0.0000, Z = -0.1874
5. FINAL MASS VALUES
 1. MASS: 1.0054 POUNDS
 2. CENTER OF MASS: X = -0.0268, Y = 0.0000, Z = -0.1861



FRONT VIEW



RIGHT VIEW

PROPRIETARY AND CONFIDENTIAL

THE INFORMATION CONTAINED IN THIS DRAWING AND ANY RELATED MATERIAL IS THE SOLE PROPERTY OF ENTERPRISE DESIGN AND INNOVATIONS. ANY SHARING OF THIS INFORMATION, IN WHOLE OR ANY PART THEREOF IS PROHIBITED WITHOUT EXPRESS WRITTEN CONSENT OF ENTERPRISE DESIGN AND INNOVATIONS.

A

HINGE PLATE (PARTIAL) SARRUS MECHANISM VARIOUS VIEWS				REVISIONS DATE:	ITEM:	NAME	DATE	UNITS IN INCHES TOLERANCES ARE 0.010 INCHES UNLESS OTHERWISE NOTED
						DRAWN	CSS	
		CHECKED	000	000				
		APPV.	000	000				
						MATERIAL	Brass	
SHEET	SHEET SCALE	SHEET SIZE	REV			VERSION DATE	10/9/2017	
1	1:1	B				SHEET FILE NAME: 171005-Hinge-Plate-Feature-Pattern		



4

3

2

1