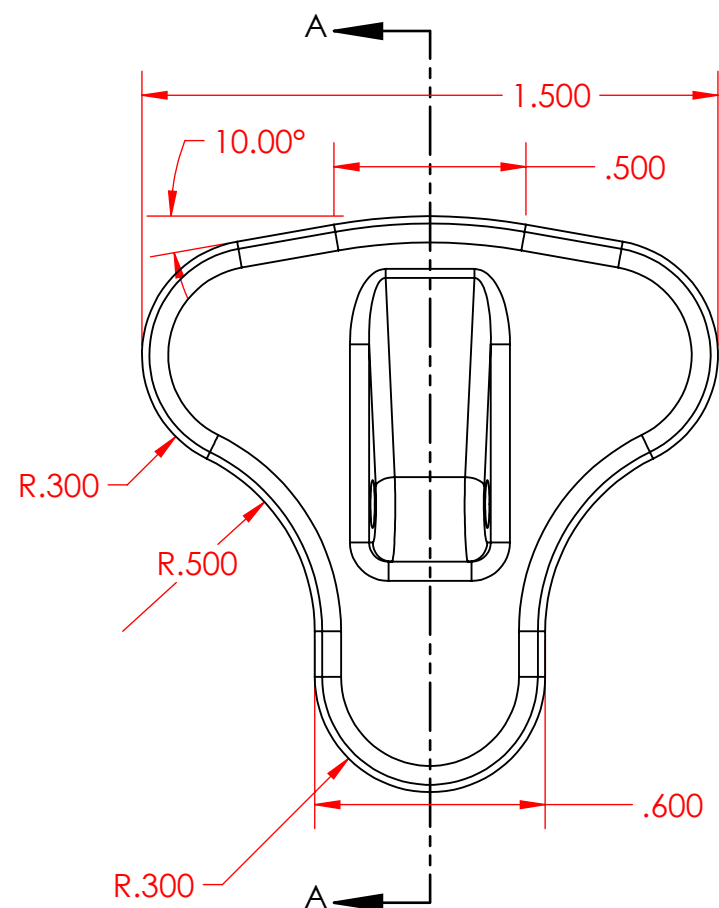
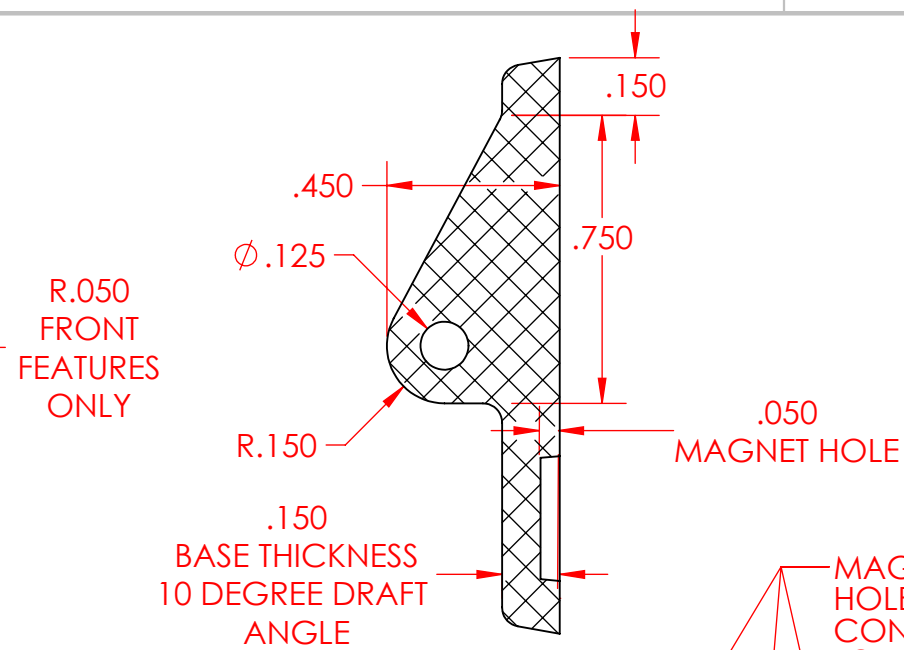


TOP VIEW

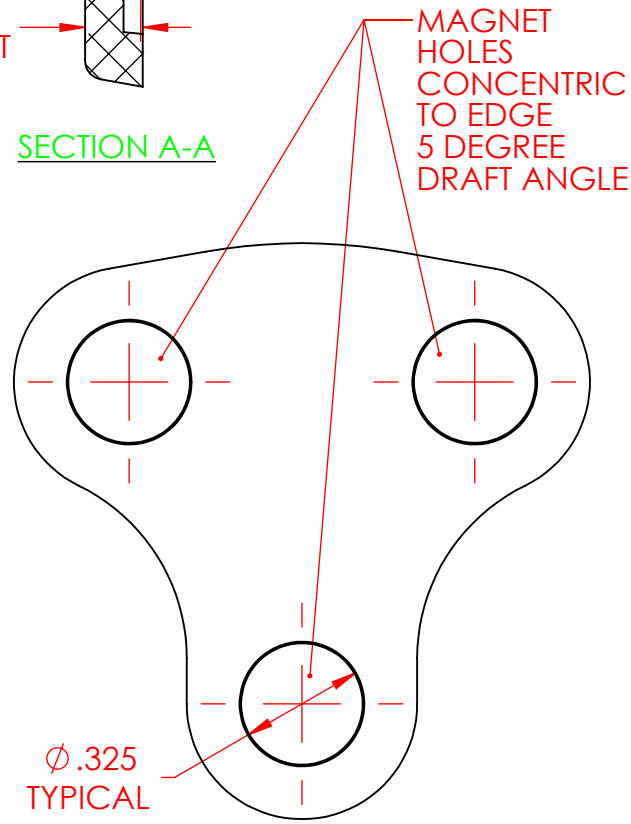


FRONT VIEW

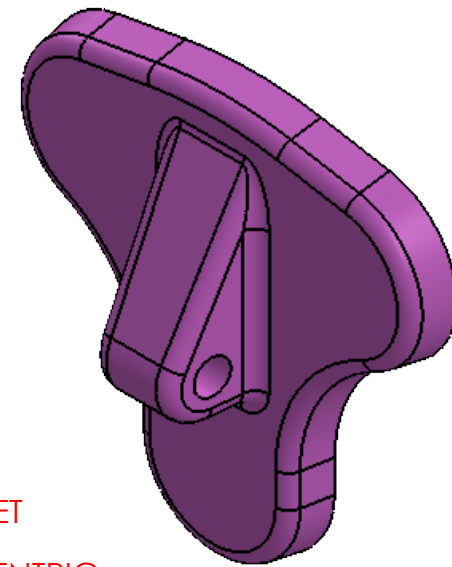


SECTION A-A

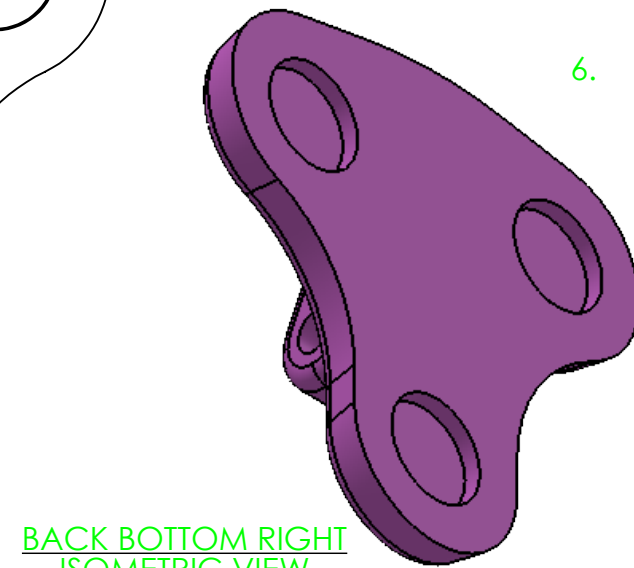
RIGHT VIEW



BACK VIEW



FRONT TO RIGHT ISOMETRIC VIEW



BACK BOTTOM RIGHT ISOMETRIC VIEW

SHEET NOTES FOR DESIGN:

SUGGESTED MODELING ORDER AND MASS PROPERTIES:

1. BASE FEATURE WITH 10 DEGREE DRAFT - MASS = 0.0068 POUNDS - CENTER OF MASS: ( INCHES ) - X = 0.0000, Y = -0.6004, Z = 0.0738
2. HOOK MOUNT - MASS = 0.0083 POUNDS, CENTER OF MASS: ( INCHES ) - X = 0.0000, Y = -0.6057, Z = 0.1086
3. HOOK MOUNT DRAFT - A 5 DEGREE DRAFT WITH THE "NEUTRAL PLANE" ON THE FRONT FACE AND THE "FACES TO DRAFT" ON BOTH SIDES OF THE HOOK MOUNT. MASS = 0.0082 POUNDS, CENTER OF MASS: ( INCHES ) - X= 0.0000, Y = -0.6049, Z = 0.1062
4. HOOK MOUNT HOLE, NOT ON THE SIDE FACES (THEY NOW HAVE AN ANGLE TO THEM), MASS = 0.0081 POUNDS, CENTER OF MASS: ( INCHES ) - X = 0.0000, Y = -0.6027, Z = 0.1032
5. BACK MAGNET HOLES - MASS = 0.0077 POUNDS, CENTER OF MASS: ( INCHES ) - X = 0.0000, Y = -0.6006, Z = 0.1075
6. FRONT FILLET, CHOOSE THE ANGLED FRONT FLAT FACE OF THE HOOK MOUNT AND THE FRONT FACE OF THE BASE. MASS = 0.0076 POUNDS, CENTER OF MASS: ( INCHES ) - X = 0.0000, Y = -0.6005, Z = 0.1066

PROPRIETARY AND CONFIDENTIAL

THE INFORMATION CONTAINED IN THIS DRAWING AND ANY RELATED MATERIAL IS THE SOLE PROPERTY OF ENTERPRISE DESIGN AND INNOVATIONS. ANY SHARING OF THIS INFORMATION, IN WHOLE OR ANY PART THEREOF IS PROHIBITED WITHOUT EXPRESS WRITTEN CONSENT OF ENTERPRISE DESIGN AND INNOVATIONS.

MAGNET HOOK MODEL 2				REVISIONS DATE:	NAME	DATE	UNITS IN INCHES TOLERANCES ARE 0.010 INCHES UNLESS OTHERWISE NOTED	
KITCHEN HARDWARE				ITEM:	DRAWN	CSS		1/8/18
HARDWARE ITEMS					CHECKED	000		000
					APPV.	000		000
					MATERIAL	PE High Density		
SHEET 1	SHEET SCALE 2:1	SHEET SIZE B	REV	VERSION DATE	1/17/2018			
				SHEET FILE NAME: 02-Magnet-Hook-02				

