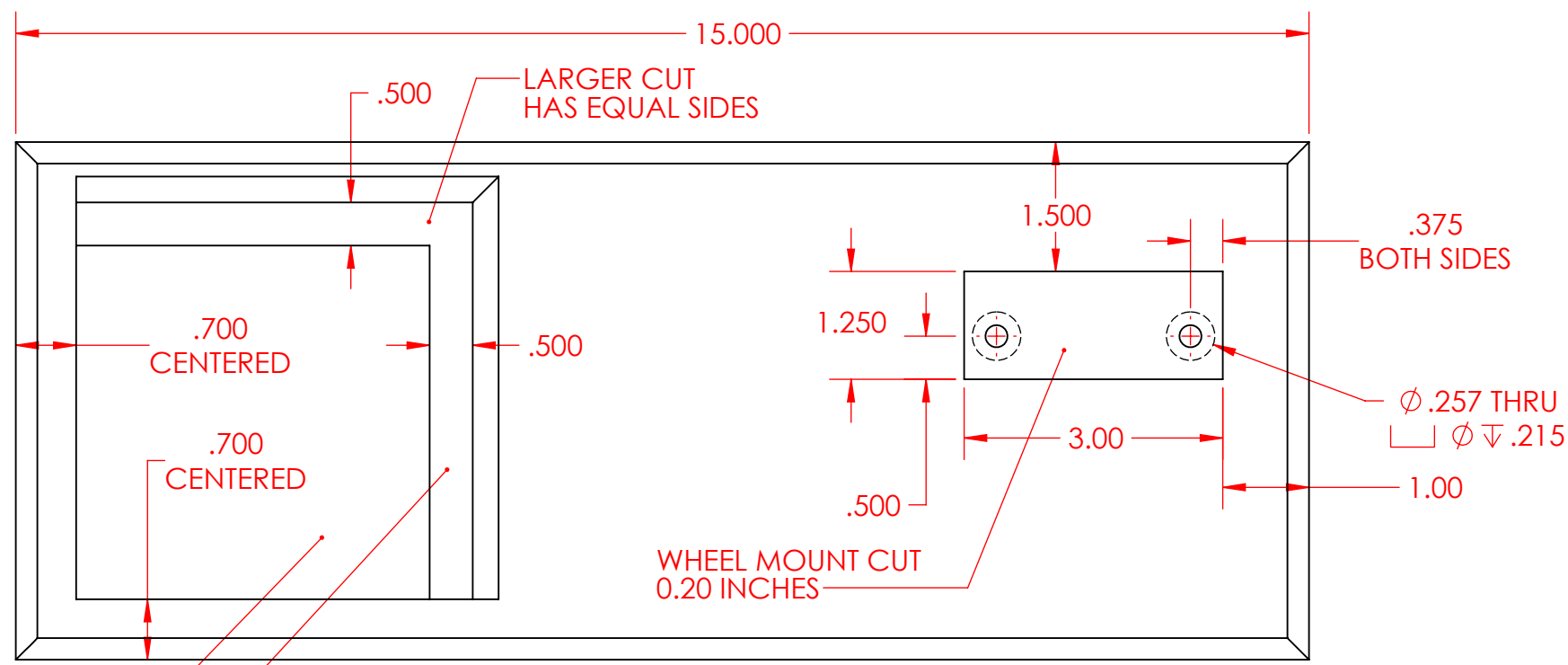


4

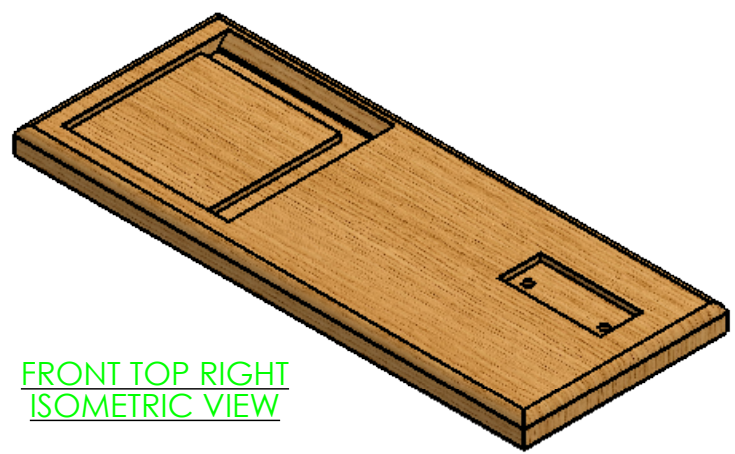
3

2

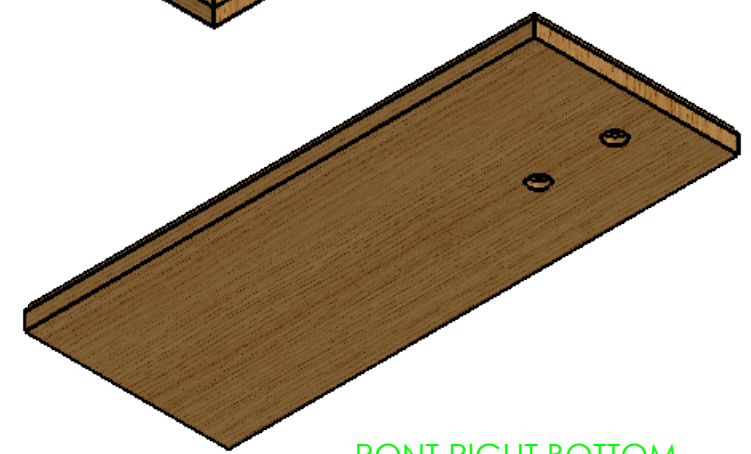
1



TOP VIEW



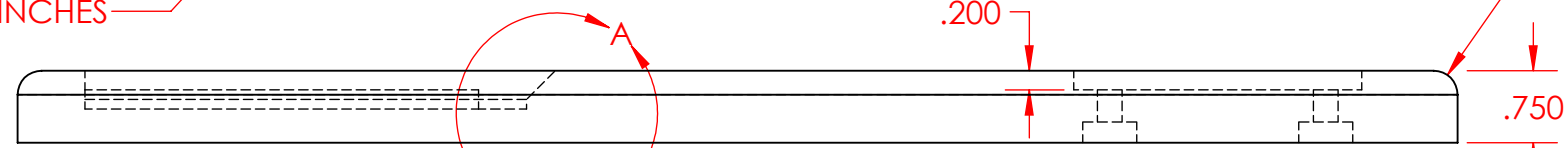
FRONT TOP RIGHT ISOMETRIC VIEW



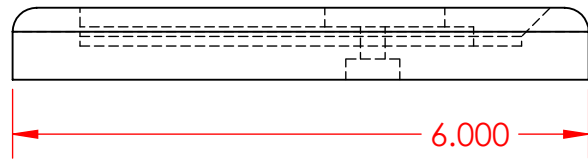
FRONT RIGHT BOTTOM ISOMETRIC VIEW

HINGE CUT 1
0.20 INCHES

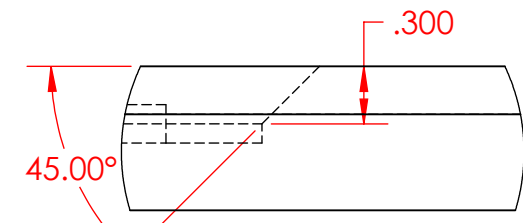
HINGE CUT 2
0.40 INCHES



FRONT VIEW



RIGHT VIEW



DETAIL A
SCALE 1:1
CHAMFER DETAIL

SHEET NOTES

1. ORIGIN AT THE CENTER OF THE BASE FEATURE, EXTRUDE IN THE TOP DIRECTION.
2. BASE FEATURE WITH FILLET - MASS: 1.3543 POUNDS, CENTER OF MASS: X = 0.0000, Y = 0.3723, Z = 0.0000
3. WHEEL MOUNT CUT WITH HOLE TYPE - COUNTER BORE, ANSI INCH, 1/4 INCH BINDING HEAD SCREW HOLE, CLOSE FIT WITH A 0.0500 INCH HEAD CLEARANCE - MASS: 1.3363 POUNDS, CENTER OF MASS: X = -0.0675, Y = 0.3696, Z = 0.0115
4. TWO HINGE CUTS - MASS: 1.2331 POUNDS, CENTER OF MASS: X = 0.2898, Y = 0.3490, Z = 0.0263
5. FINAL - MASS: 1.2245 POUNDS, CENTER OF MASS: X = 0.3147, Y = 0.3469, Z = 0.0351

PROPRIETARY AND CONFIDENTIAL

THE INFORMATION CONTAINED IN THIS DRAWING AND ANY RELATED MATERIAL IS THE SOLE PROPERTY OF ENTERPRISE DESIGN AND INNOVATIONS. ANY SHARING OF THIS INFORMATION, IN WHOLE OR ANY PART THEREOF IS PROHIBITED WITHOUT EXPRESS WRITTEN CONSENT OF ENTERPRISE DESIGN AND INNOVATIONS.

SARRUS MECHANISM BASE PLATE

SARRUS MECHANISM
VARIOUS VIEWS

REVISIONS DATE:	ITEM:	NAME	DATE
		DRAWN CSS	10/4/17
		CHECKED 000	000
		APPV. 000	000
		MATERIAL Oak	
		VERSION DATE	1/22/2018
SHEET FILE NAME: 03-Sarrus-Base-Plate			

UNITS IN INCHES
TOLERANCES ARE 0.010 INCHES UNLESS OTHERWISE NOTED

SHEET 1	SHEET SCALE 1:4	SHEET SIZE B	REV
---------	-----------------	--------------	-----



4

3

2

1

B

B

A

A