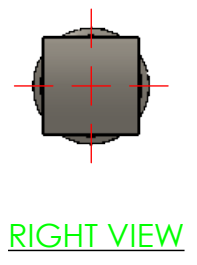
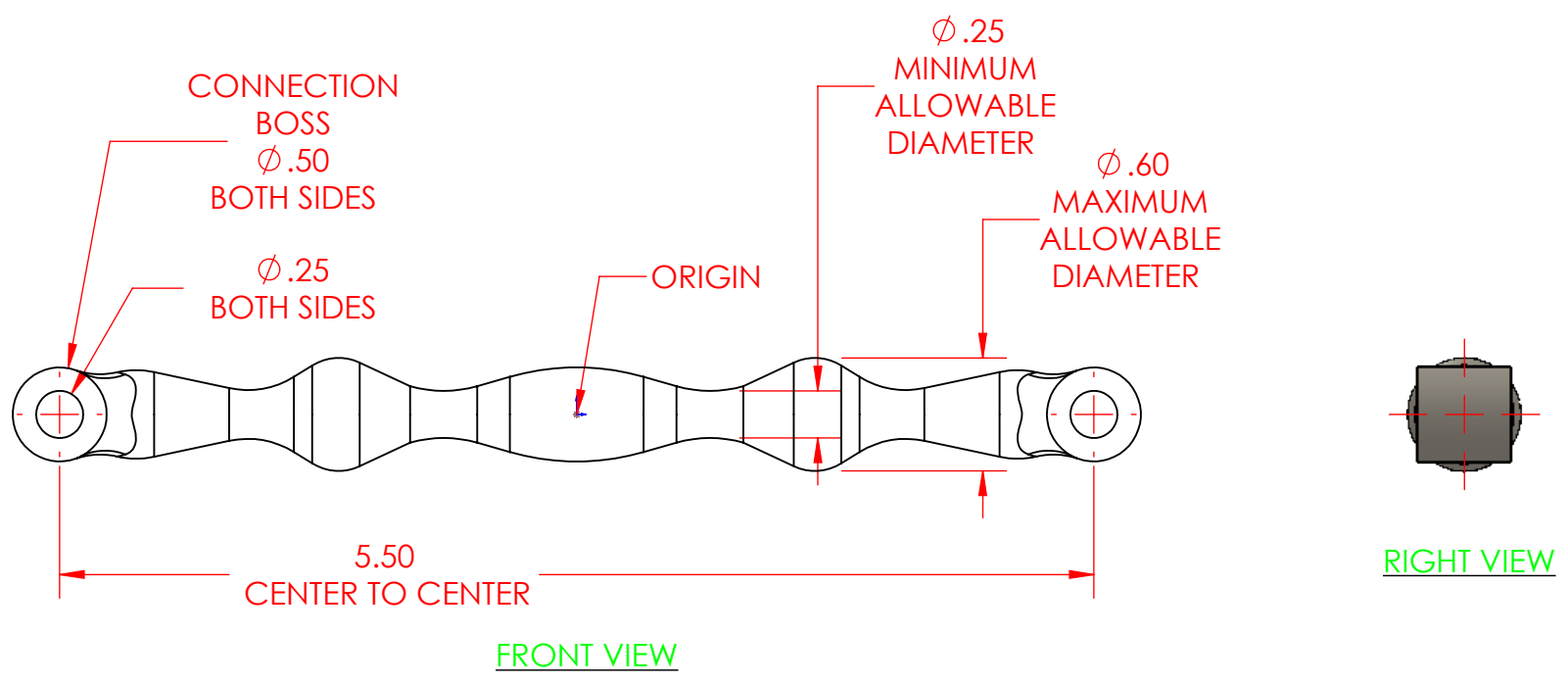
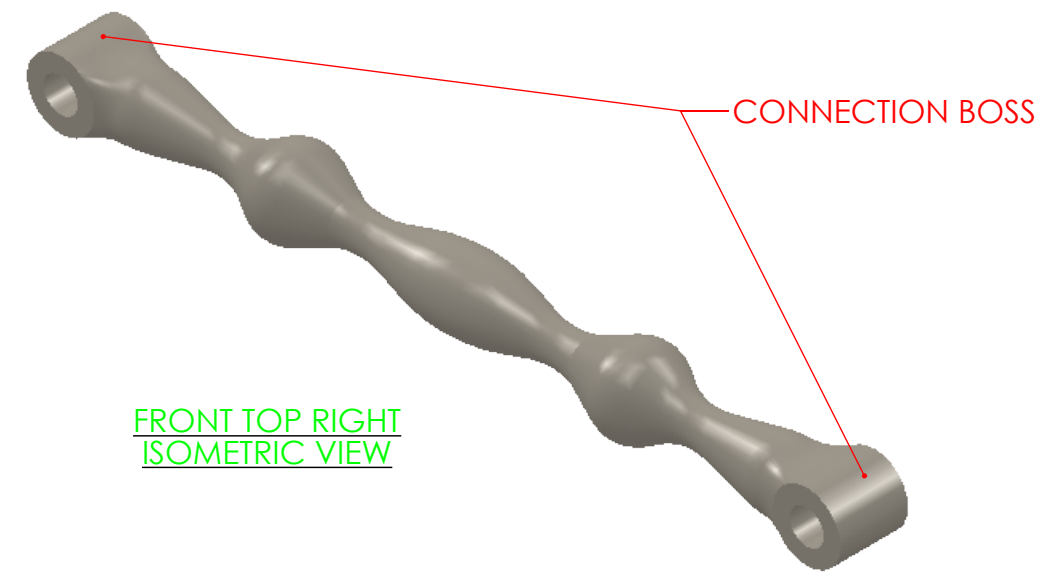
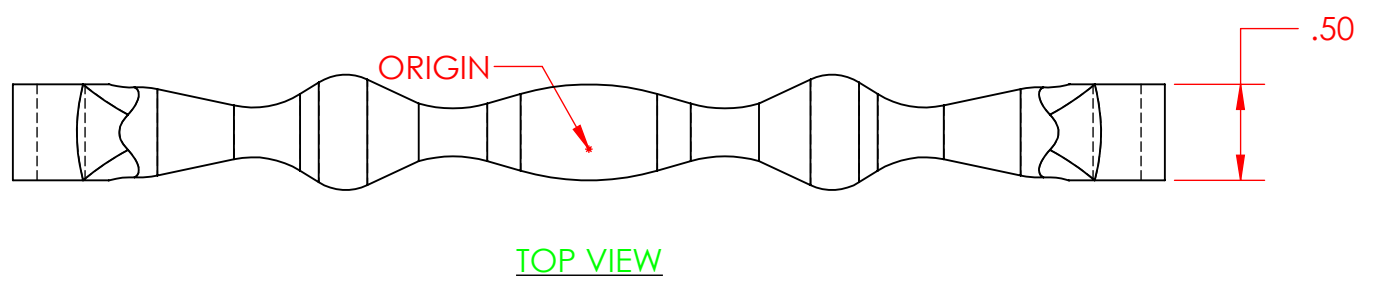


4

3

2

1



SHEET NOTES:

1. LOTS OF SYMMETRY, TAKE ADVANTAGE OF IT
2. MATERIAL OF YOUR CHOICE
3. CONNECTION BOSS ON THE FRONT PLANE, SEE DIMENSIONS IN DRAWING VIEW, MID PLANE EXTRUSION, MIRROR SKETCH OR FEATURE
4. REVOLVED BOSS/BASE FEATURE WITH FULLY DEFINED SKETCHES. DESIGN OF YOUR CHOICE, SKETCH MUST CONTAIN MODEL LINES AND MODEL ARCS (NO SPLINES) DIMENSIONED WITH ANGLE AND DISTANCE DIMENSIONS ONLY TO THE HORIZONTAL CENTER LINE (NO RADIUS DIMENSIONS). INCORPORATE THE MINIMUM AND MAXIMUM ALLOWABLE DIAMETERS AS SHOWN.

PROPRIETARY AND CONFIDENTIAL

THE INFORMATION CONTAINED IN THIS DRAWING AND ANY RELATED MATERIAL IS THE SOLE PROPERTY OF ENTERPRISE DESIGN AND INNOVATIONS. ANY SHARING OF THIS INFORMATION, IN WHOLE OR ANY PART THEREOF IS PROHIBITED WITHOUT EXPRESS WRITTEN CONSENT OF ENTERPRISE DESIGN AND INNOVATIONS.

SARRUS PUSH ROD				REVISIONS DATE:	ITEM:	NAME	DATE	UNITS IN INCHES TOLERANCES ARE 0.010 INCHES UNLESS OTHERWISE NOTED
						DRAWN	CSS	
SARRUS MECHANISM								
				CHECKED	YOU	4/12/18		
VARIOUS VIEWS								
				APPV.	000	000		
				MATERIAL Duranickel(R) 301				
SHEET	SHEET SCALE	SHEET SIZE	REV	VERSION DATE			4/11/2018	
1	1:1	B		SHEET FILE NAME: 03-Sarrus-Push-Rod-1				



4

3

2

1

A

A